



Fabquip[®] Construction Systems

"The Jump Above"

FABQUIP'S SAFETY PERIMETER SCREENS



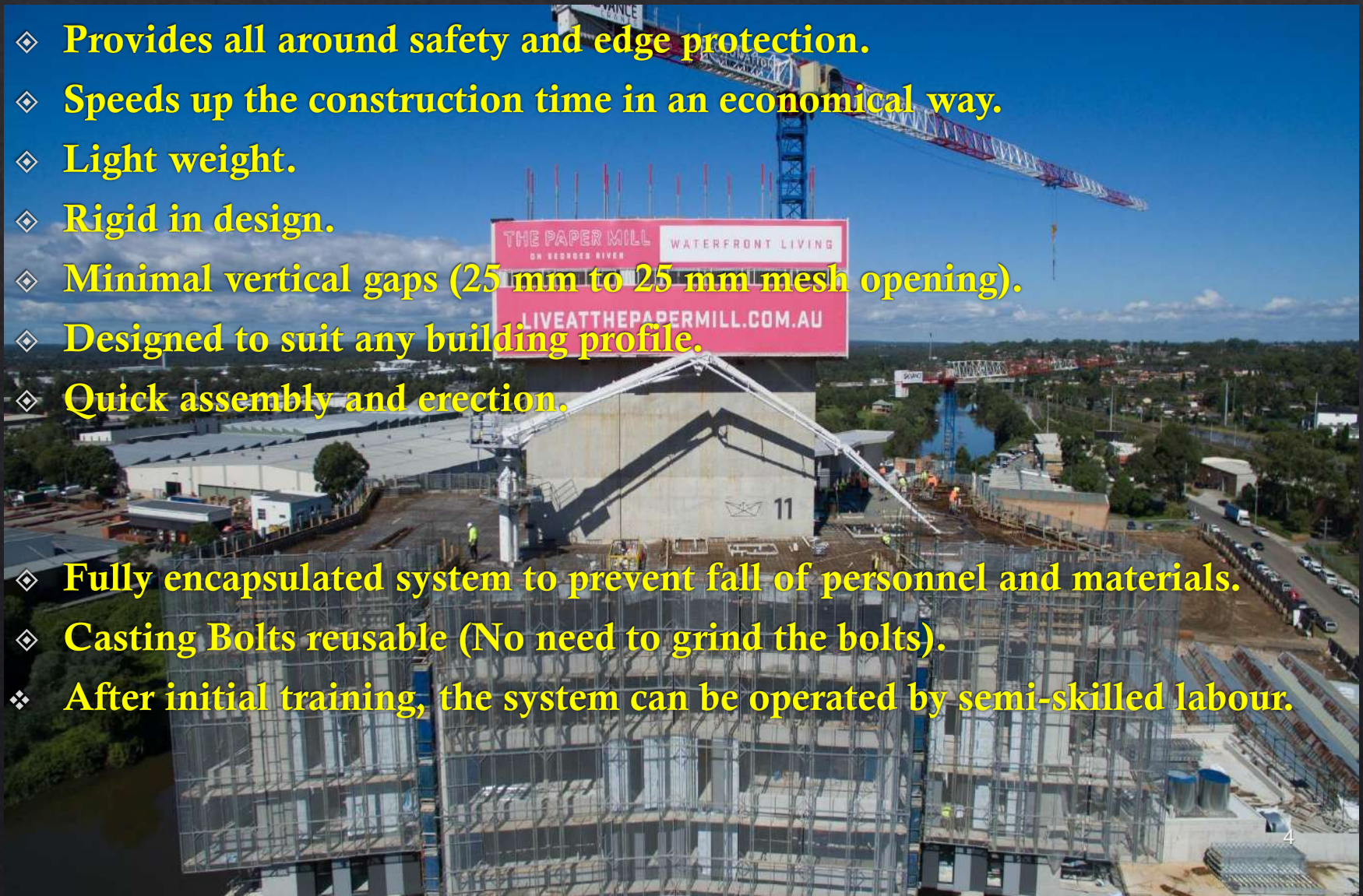
**REVESBY, NSW,
AUSTRALIA**

OVERVIEW

- 1. Introduction**
- 2. Design**
- 3. Installation**
- 4. Operation / Climbing Process**
- 5. Compliance**
- 6. Safety and Maintenance**
- 7. Documentation**

1. INTRODUCTION

- ◆ Provides all around safety and edge protection.
- ◆ Speeds up the construction time in an economical way.
- ◆ Light weight.
- ◆ Rigid in design.
- ◆ Minimal vertical gaps (25 mm to 25 mm mesh opening).
- ◆ Designed to suit any building profile.
- ◆ Quick assembly and erection.
- ◆ Fully encapsulated system to prevent fall of personnel and materials.
- ◆ Casting Bolts reusable (No need to grind the bolts).
- ◆ After initial training, the system can be operated by semi-skilled labour.



2. DESIGN

- ◇ **COVERAGE HEIGHT** - 7m to 20m.

(Can be used for both structural work and finishing work)

- ◇ **WALKWAY PLATFORM** - Varies from (650mm) to (1000mm)

- ◇ **CLIMBING MECHANISM** - Crane Assisted or Hydraulic Self-Climbing.

- ◇ **FORMWORK HOIST & ALIMAK** - Fabquip Hoist and Alimak can be incorporated into the system.

- ◇ **TRAILING SCREENS** - Screens underneath the loading platforms can be provided.

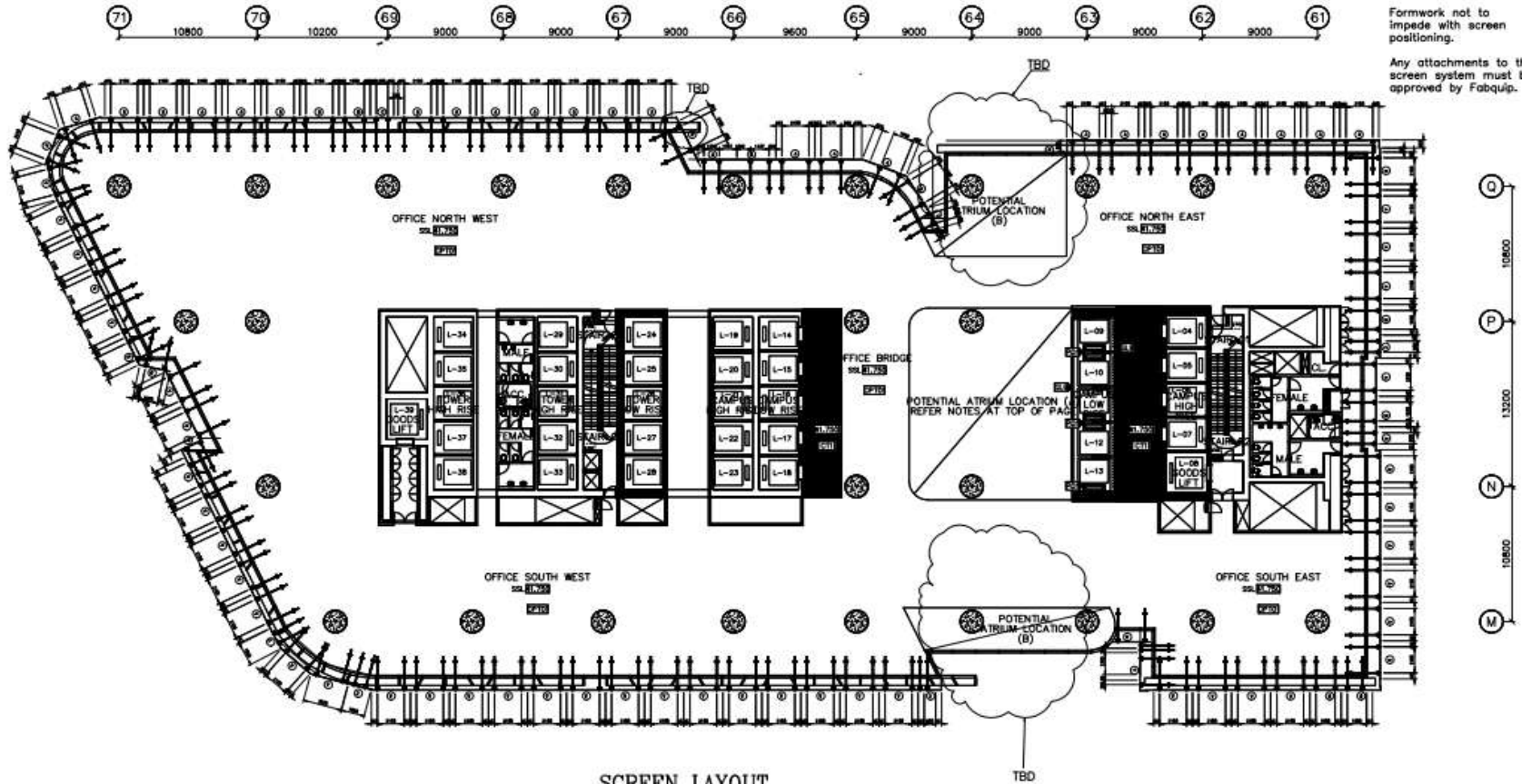
LAYOUT

GENERAL NOTES

The Screen System is not to be raised if wind speeds exceed 12 metres per second.

Formwork not to impede with screen positioning.

Any attachments to the screen system must be approved by Fabquip.



SCREEN LAYOUT
STAGE 1 (LEVEL 3 LOW RISE- U/S LEVEL 16)

PROPOSAL ONLY

Copyright (Date)
Reproduction of the whole or part of this document constitutes an infringement of copyright. All information shown is confidential and the recipient is prohibited from disclosing such information to any person without the prior written consent of FABQUIP CONSTRUCTION SYSTEMS PTY LTD.
ALBA 84 502 887 238

IMPORTANT NOTES
DIMENSIONS TO BE: -3mm
SCALE: 1:100 FOR ALL DIMENSIONS
ALL DIMENSIONS TO BE IN ACCORDANCE WITH RELEVANT AND ALL OTHER CURRENT RELEVANT CODES.

DATE	REVISION	BY	DATE	REVISION	BY	DATE	REVISION	BY

Fabquip
Construction Systems Pty. Ltd.

Head Office
25-27 The Arcade Street
Melbourne VIC 3000
PO Box 667 Melbourne VIC 3001
Tel: 03 9427 1000 Fax: 03 9427 1001
Email: info@fabquip.com.au
Web: www.fabquip.com.au

SCALE: 1 : 300 (A0)
ISSUED: 25.04.2018
CHECKED:

GAP FILE No. JF5718
SC5718-S1

LAYOUT

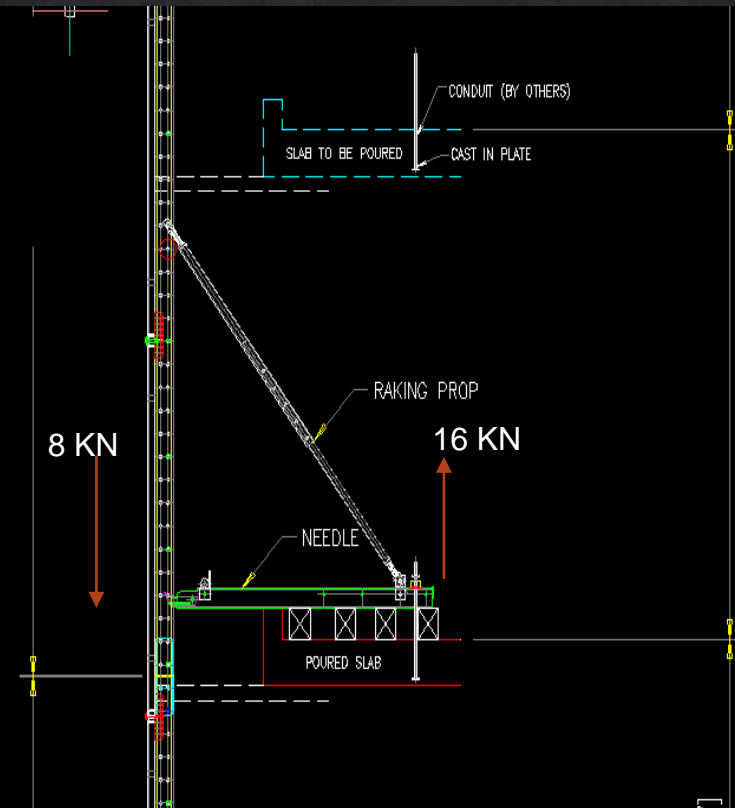
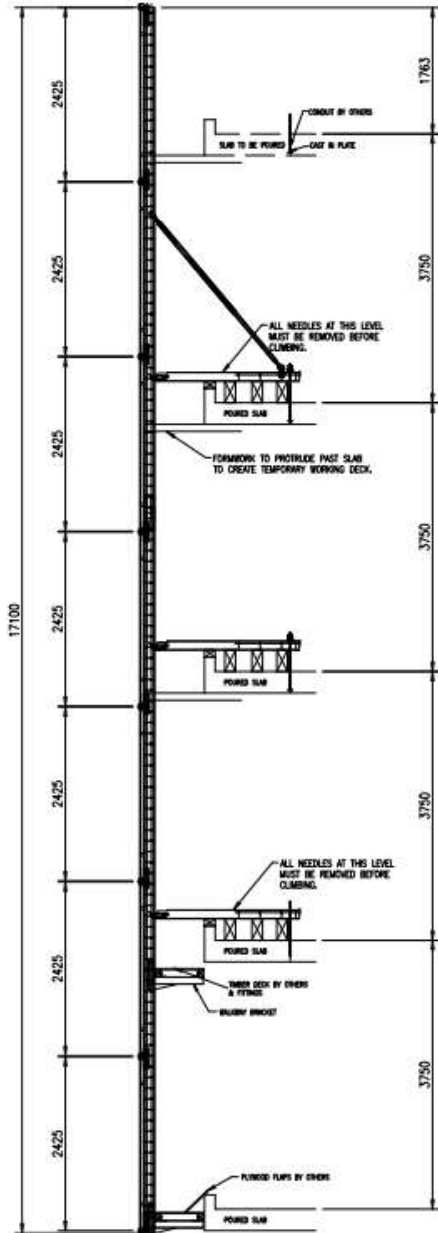
SECTION

LOADINGS:

MAXM WIND SPEED DURING LIFTING= 45 km/hr

MAX. LOAD ON EACH NEEDLE = 8 KN

MAX. REACTION LOAD ON SLAB = 16 KN



SCREEN SECTION

FOR CONSTRUCTION

Copyright: Drawn by the name or part of the document conditions as indicated or otherwise. All rights reserved. No part of this document may be reproduced, stored in a retrieval system, or transmitted in any form or by any means, electronic, mechanical, photocopying, recording, or by any information storage and retrieval system, without the prior written permission of the copyright owner.

IMPORTANT NOTES:
 DIMENSIONS TO FACE UNLESS OTHERWISE SPECIFIED
 UNITS: METERS (M)
 ALL DIMENSIONS TO BE IN ACCORDANCE WITH THE LATEST VERSION OF IS: 8000 AND IS: 8001
 ALL DIMENSIONS TO BE IN ACCORDANCE WITH THE LATEST VERSION OF IS: 8000 AND IS: 8001
 ALL DIMENSIONS TO BE IN ACCORDANCE WITH THE LATEST VERSION OF IS: 8000 AND IS: 8001

DATE	REVISION	BY

Fabquip
 Construction Systems Pvt. Ltd.
 Plot No. 10, Sector 10, Gurgaon, Haryana
 India. Pin Code: 122001
 Phone: +91 122 404118
 Fax: +91 122 404119
 Email: info@fabquip.com

SCALE	DATE
1 : 40 (A3)	24.04.18
DESIGNED	25.07.18
DWG FILE NO.	250718
PROJECT NO.	250718-950

3. INSTALLATION

1. **CAST-IN PLATES AND BOLTS** ARE EMBEDDED INTO THE CONCRETE SLAB BEFORE THE POUR.
2. **NEEDLES** ARE FIXED FIRMLY IN THE SLAB, WITH THE HELP OF CAST-IN BOLTS.
3. FACTORY ASSEMBLED **SCREEN PANELS, WITH STEEL PURLIN**, ARE LIFTED AND FIXED BY THE CRANE. NEEDLES SUPPORT THE SCREEN PANELS.
4. **PROPS AND WALKWAY BRACKETS** ARE FIXED AND THE DECK IS CONSTRUCTED.
5. MORE NEEDLES ARE PUT IN THE FOLLOWING POURS UNTIL THE SCREEN GETS TYPICAL.

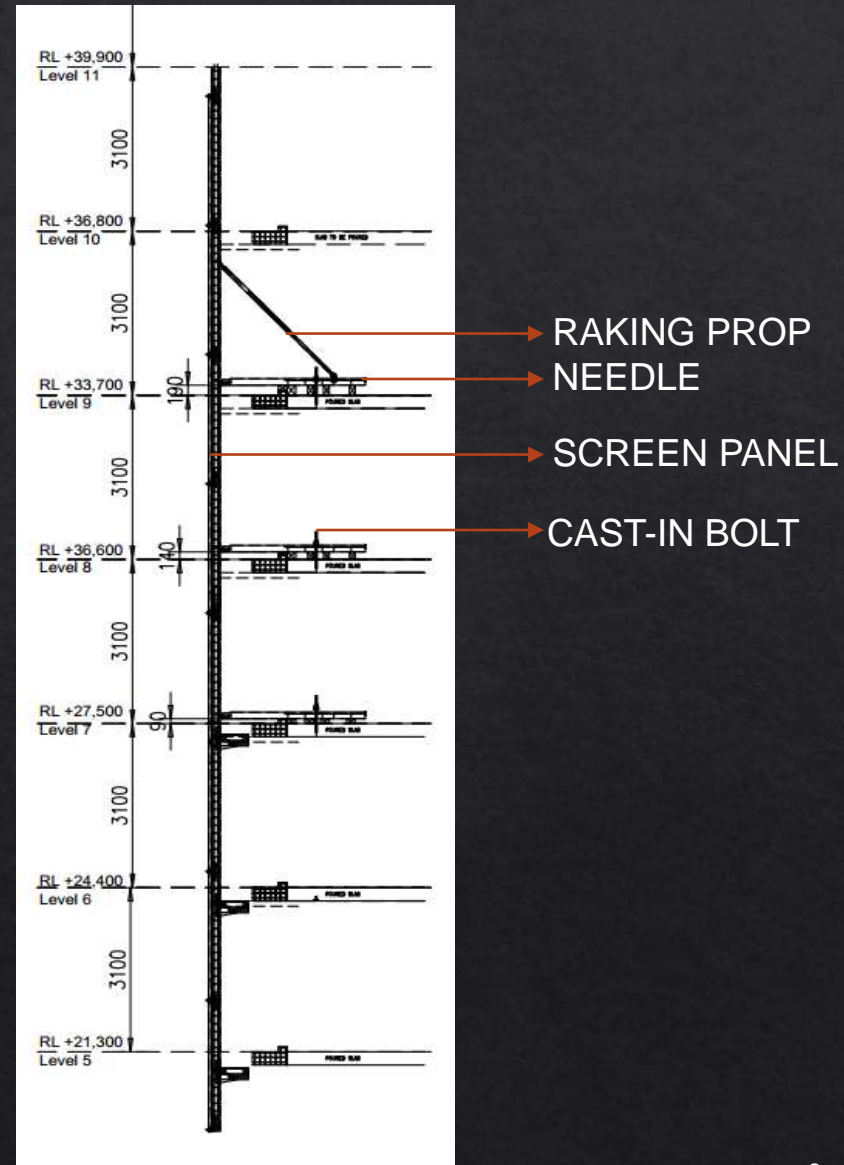
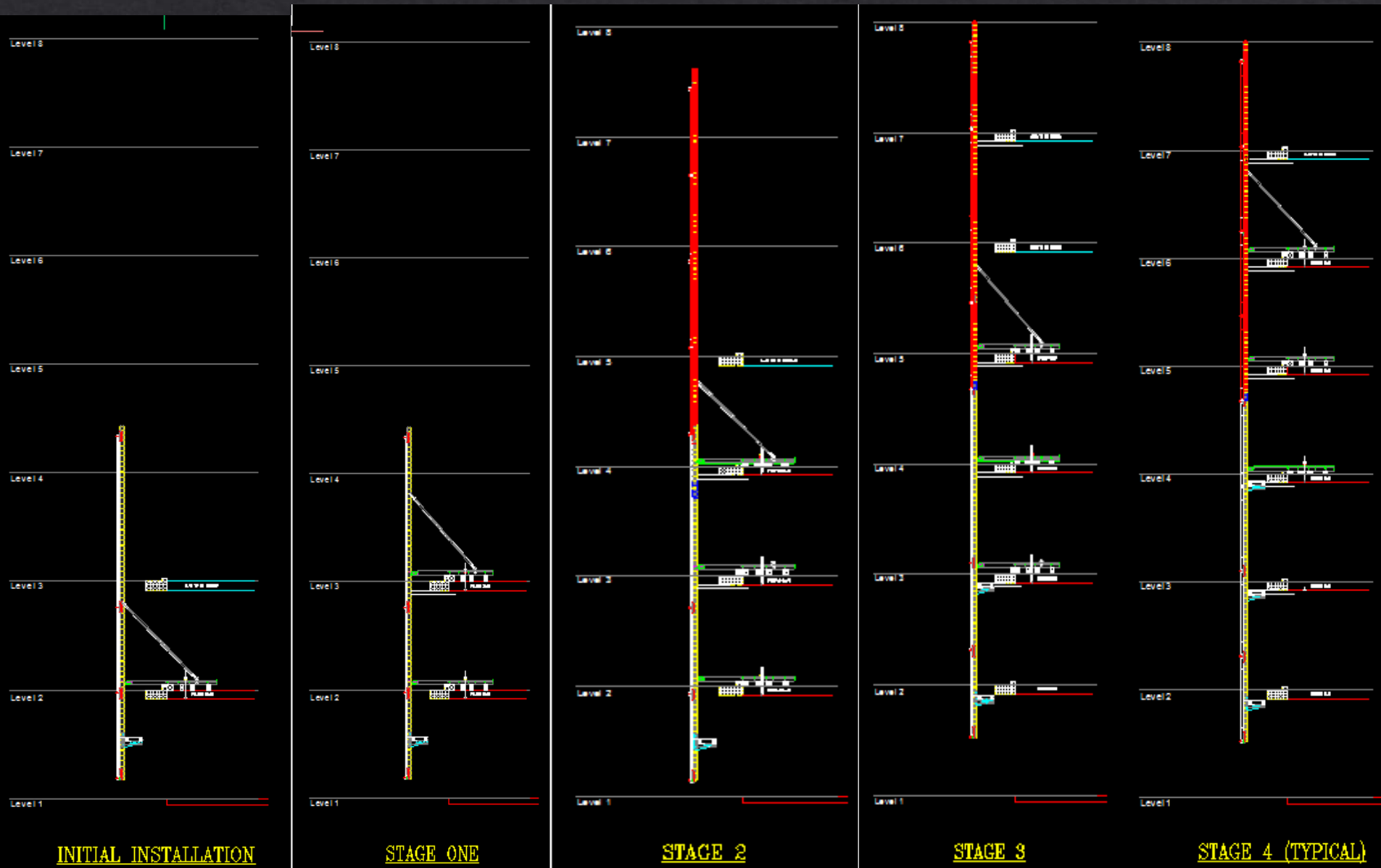


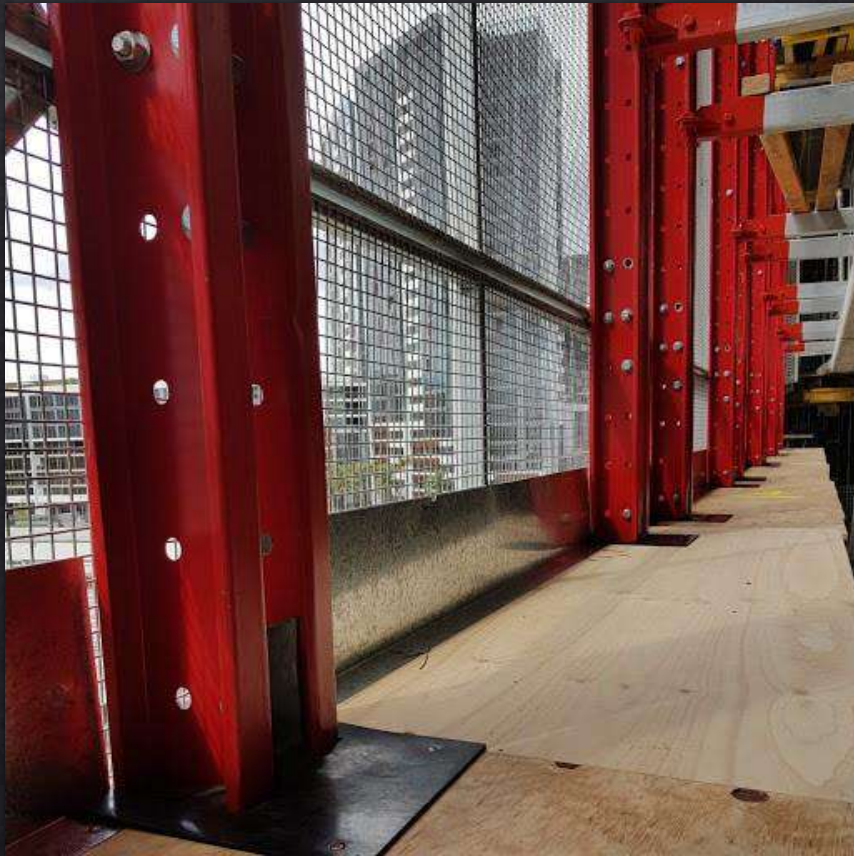
FIG: TYPICAL SCREEN SECTION

INSTALLATION (Cont.)

THE STAGING SEQUENCE



INSTALLATION (Cont.)



METAL SKIRTING IN WORKING DECK



RUBBER INFILL IN SOLDIER PURLIN



WORKING DECK FROM UNDERSIDE



SCREEN ELEVATION WITH PLATFORMS

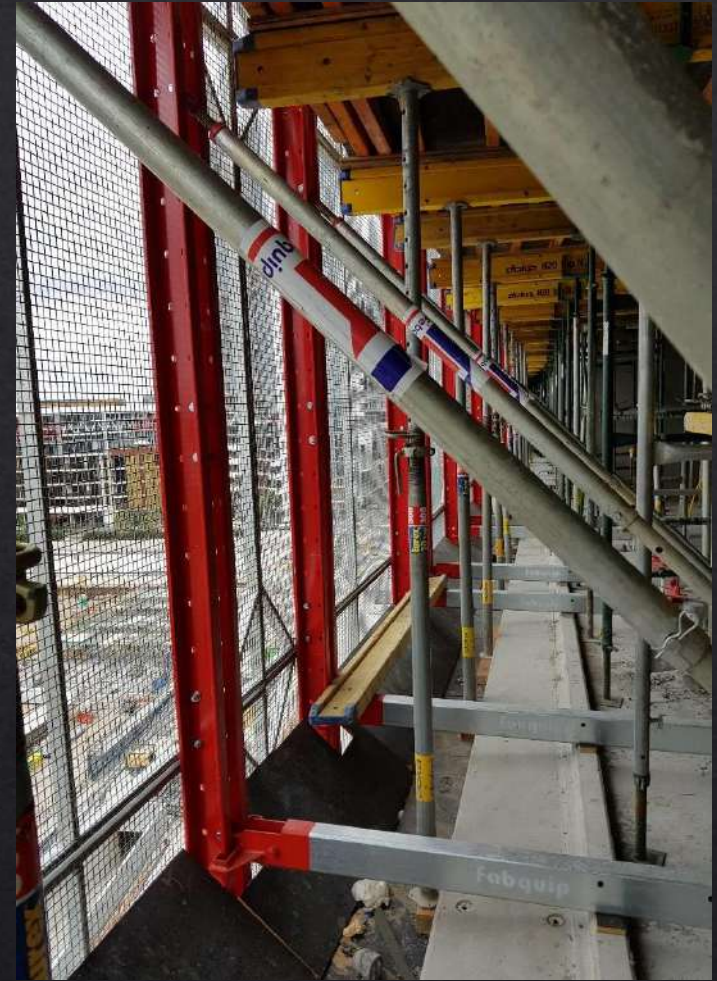
4. OPERATION

- ◇ ONCE THE SCREEN ASSEMBLY GETS TYPICAL, THERE ARE TWO WAYS TO CLIMB THE SCREENS.
- ◇ - CRANE ASSISTED
- ◇ - HYDRAULIC JACK ASSISTED

CRANE ASSISTED: THE PROPS ARE DISENGAGED AND CRANE WILL HELP TO LIFT THE SCREENS.

ONCE THE CLIMB IS COMPLETED, THE PROPS WILL BE PLACED BACK AND SCREEN WILL BE SEATED ON UPPER LEVEL NEEDLE.

HYDRAULIC ASSISTED: SINGLE HYDRAULIC RAM WILL BE INSTALLED IN EACH PURLIN, ATTACHED TO THE NEEDLE, AND WILL CLIMB UP TO 3 SCREENS AT ONCE BY THE PUSH OF 10 AMP HYDRAULIC POWERPACK. EACH STROKE WILL CLIMB 2 FT 10 INCHES.



5. COMPLIANCE

- ◇ OUR SCREEN SYSTEM COMPLIES WITH THE AUS/NZ STANDARDS, CONSTRUCTION GUIDES AND BEST PRACTICES.
- ◇ MOREOVER, WE PROVIDE SITE INSPECTIONS FOR COMPLIANCE CHECKS, ON A PERIODIC BASIS, FOR ENSURING THE SYSTEM IS INSTALLED AND OPERATED COMPLYING WITH THE SYSTEM MANUAL.
- ◇ WE DEPLOY OUR SITE TECHNICIANS TO GUIDE AND HELP IN THE ENTIRE PROCESS OF INSTALLATION AND INITIAL OPERATION.



6. SAFETY AND MAINTENANCE

- ◆ FABQUIP IS HIGHLY COMMITTED AND DEDICATED TO SAFETY OF THE WORKERS, SYSTEM AND THE SITE.
- ◆ EVERY SINGLE PROCESS IS GUARANTEED TO COMPLY WITH THE INDUSTRY BEST WORK, HEALTH AND SAFETY STANDARDS.
- ◆ WE PROVIDE SAFETY AND MAINTENANCE CHECKS QUARTERLY, OR AS REQUIRED, TO ENSURE OUR SYSTEM IS SAFE AND WELL MAINTAINED THROUGHOUT THE OPERATION PROCESS.



7. DOCUMENTATION

- ◇ Design (Shop Drawings) – Fabquip.
- ◇ Safety Screen System Manual – Fabquip.
- ◇ Pre and Post Climb Checklist – Client.
- ◇ High Risk SWMS – Client.



MANUFACTURING



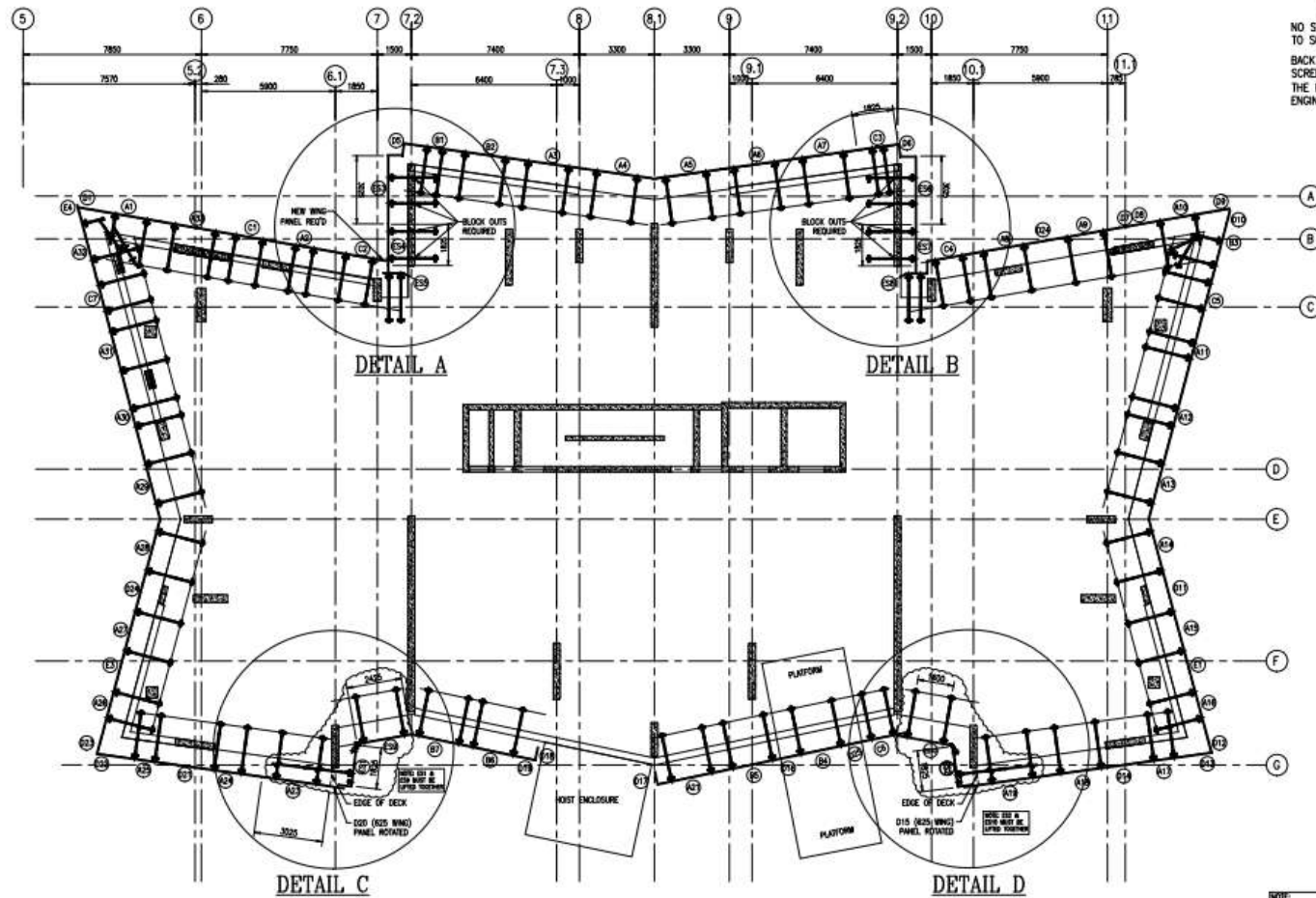
INSTALLATION



TRANSPORTATION



PAST PROJECTS



GENERAL NOTES
 NO SHADE CLOTH TO BE ATTACHED TO SCREENS.
 BACK PROPPING TO STRUCTURE FOR SCREEN LOADS TO BE ADVISED BY THE PROJECT'S STRUCTURAL ENGINEER.

CRANE ASSISTED SAFETY SCREEN LAYOUT

NOTE: UP TURN 6000x3000 TYP. WHERE APPLICABLE

FOR CONSTRUCTION

Copyright (Date))
 Reproduction of the whole or part of the document constitutes an infringement of copyright. All information shown is confidential and the recipient is prohibited from disclosing such information to any person without the prior written consent of FABQUIP CONSTRUCTION SYSTEMS PTY LTD. A.B.N 64 002 687 238

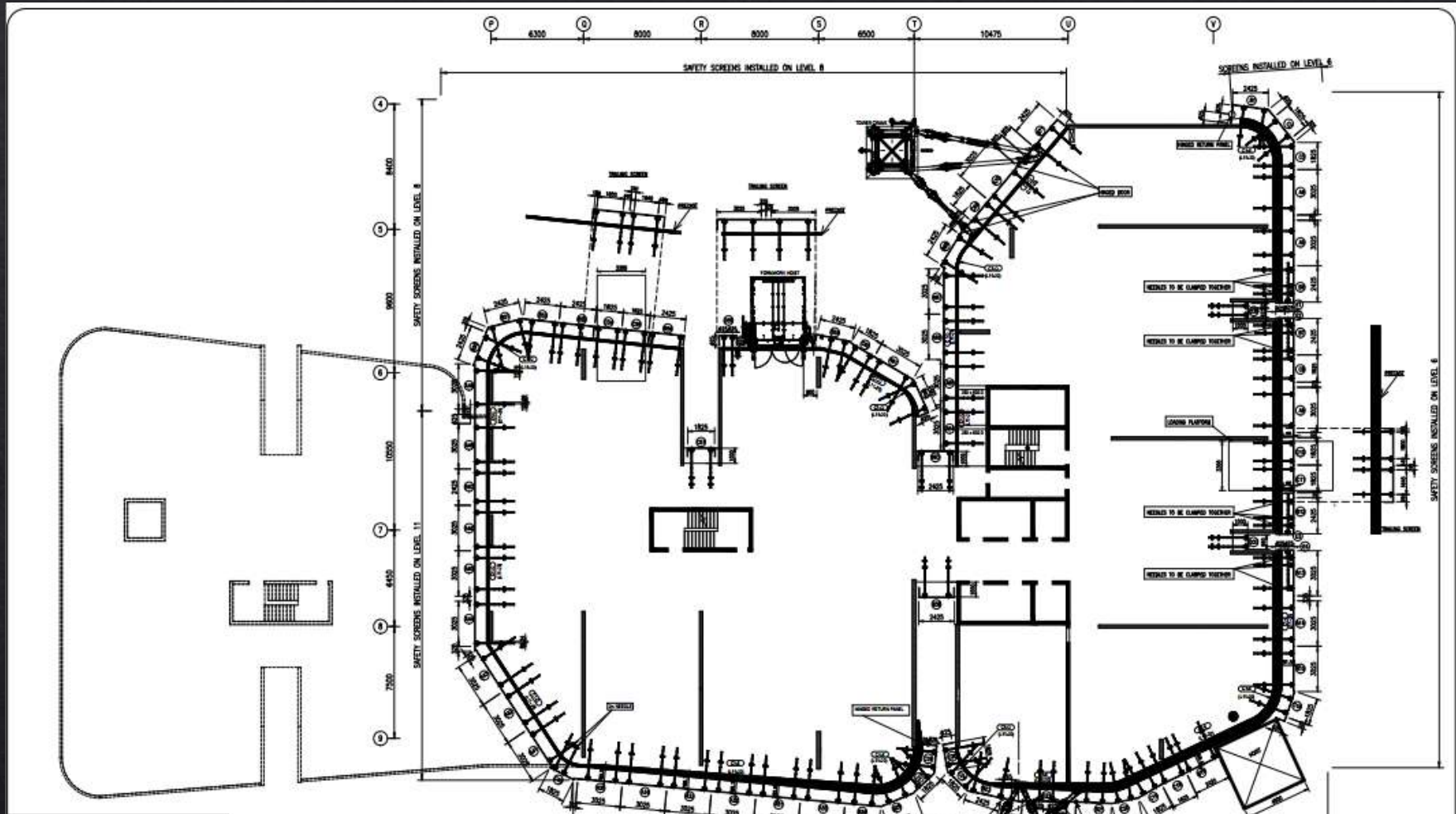
IMPORTANT NOTES
 TOLERANCES TO BE: -/+0mm -2mm
 HOLES 12 mm DIA. U.N.O.
 WELD ALL WELDS TO BE 6 mm C7M U.N.O.
 ALL WELDS TO AS 1554 PART 1
 GAUSSWY SP USING G41 ELECTRODES
 ALL WELD SYMBOLS TO AS 1101 PART 3
 ALL WORKMANSHIP AND MATERIALS TO BE IN ACCORDANCE WITH AS4100 AND ALL OTHER CURRENT RELEVANT CODES.

DATE	REVISION	BY
20.06.17	A. DETAIL C & D REVISED AS REQUESTED.	G.M.
	DETAIL A & DETAIL B NOT REQUIRED	
17.07.17	B. DETAIL A & B REINSTATED.	G.M.

Fabquip
 Construction Systems Pty. Ltd.
 PAST PROJECT
 CRANE ASSISTED SAFETY SCREEN LAYOUT

Head Office
 36-42 Fitzgerald Street
 Rossmore NSW Australia 2212
 P.O. Box 524 Rossmore NSW 2212
 Tel: (02)97744399 Fax: (02)97745089
 Email: info@fabquip.com.au
 A.B.N. 64 002 687 238

SCALE	1 : 175 (A3) / 90 (A1)
DRAWN	G.M. 30.05.17
CHECKED	
CAD FILE No.	JF5595
	JF5595-A-S10/B



IMPORTANT NOTES
 TOLERANCES TO BE... +0mm -2mm
 HOLES 22 mm DIA. UNL.D.
 WELD ALL WELDS TO BE 8 mm CRF UNL.D.
 ALL WELDS TO AS 1504 PART 1
 CATEGORY SP USING 641 ELECTRODES
 ALL WELD SYMBOLS TO AS 1101 PART 3
 ALL WORKMANSHIP AND MATERIALS TO BE IN ACCORDANCE WITH AS4100 AND ALL OTHER CURRENT RELEVANT CODES.

BLOCK E3 SCREEN PROPOSAL LAYOUT

FOR CONSTRUCTION

Copyright (Date) Reproduction of the whole or part of the document constitutes an infringement of copyright. All information shown is confidential and the recipient is prohibited from disclosing such information to any person without the prior written consent of FABQUIP CONSTRUCTION SYSTEMS PTY LTD. A.B.N 64 002 687 238

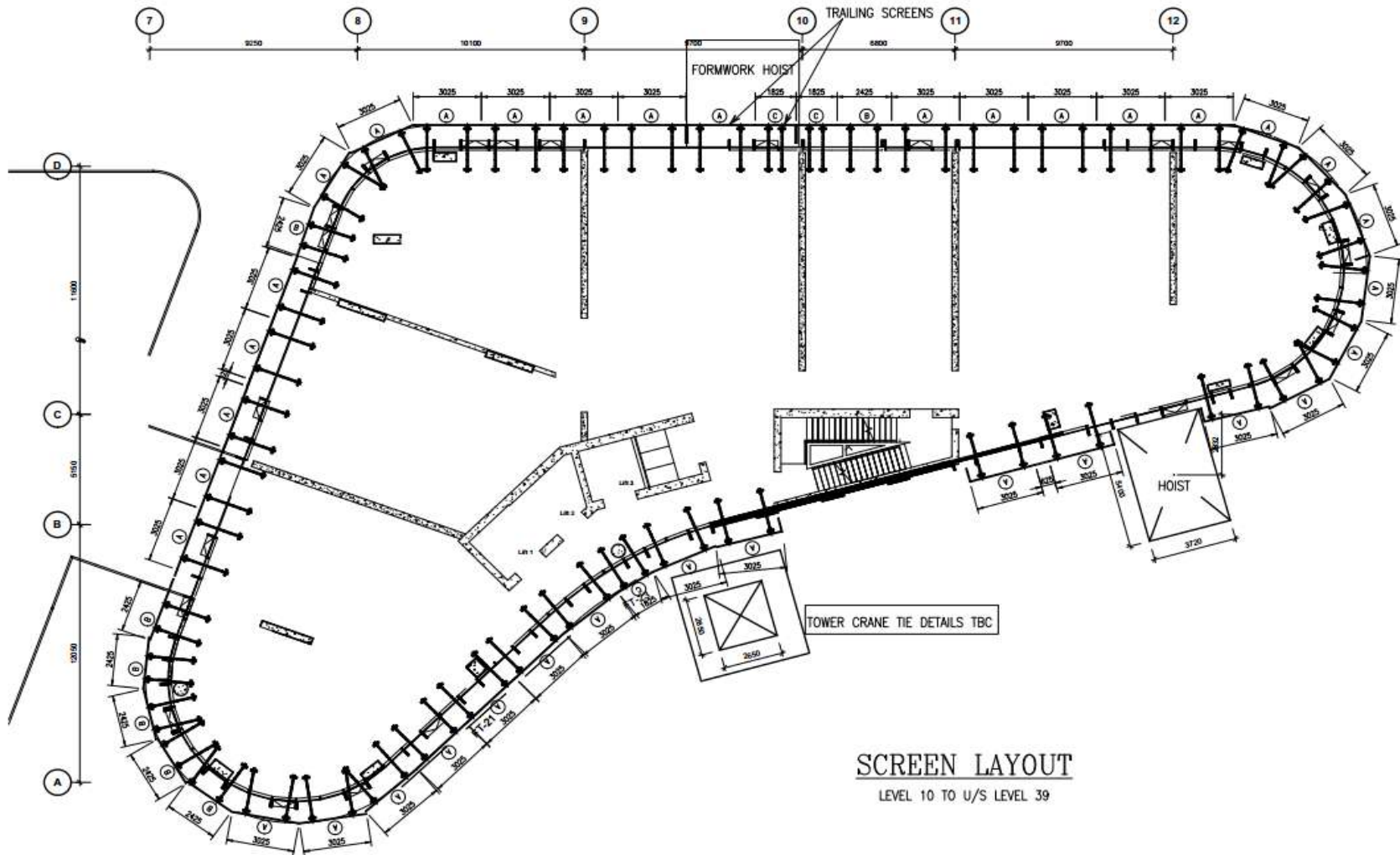
DATE	REVISION	BY	DATE	REVISION	BY
24.10.17	F. REVISED FOR NUMBERING OF SCREENS	S.B.	21.9.17	A. REVISED TO SUIT CRANE TIES AND HOIST.	S.B.
22.10.17	G. REVISED FOR TRAILING SCREENS	S.B.	27.9.17	B. REVISED TO SUIT CLIENT MARK-UP	S.B.
			12.10.17	C. REVISED FOR DETAILED INFORMATION	S.B.
			16.10.17	D. REVISED TO SUIT CLIENT MARK-UP	S.B.
			17.10.17	E. REVISED TO SUIT CLIENT MARK-UP	S.B.

Fabquip
 Construction Systems Pty. Ltd.

Head Office
 20-22 Fitzpatrick Street
 Pymbyl NSW Australia 2212
 P.O. Box 824 Pymbyl NSW 2212
 Tel: (03)97144000 Fax: (03)97140096
 Email: info@fabquip.com.au
 A.B.N. 64 002 687 238

PAST PROJECT
 PROPOSED CRANE ASSISTED SCREEN LAYOUT

SCALE	1 : 240 (A3) / 1 : 120 (A1)
DRAWN	G.M. 24.05.17
CHECKED	20
CAD FILE No.	JF5607
SC5607-E3-S1/G	



SCREEN LAYOUT

LEVEL 10 TO U/S LEVEL 39

Copyright (Date)
 Reproduction of the whole or part of
 the document constitutes an infringement of
 copyright. All information shown is
 confidential and the recipient is prohibited
 from disclosing such information to any
 person without the prior written consent of
 FABQUIP CONSTRUCTION SYSTEMS PTY LTD.
 A.B.N. 64 002 667 238

IMPORTANT NOTES
 TOLERANCES TO BE... +0mm -2mm
 HOLES 22 mm DIA. UNL.O.
 WELD ALL WELDS TO BE 6 mm OFW UNL.O.
 ALL WELDS TO AS 1554 PART 1
 CATEGORY SP USING E41 ELECTRODES
 ALL WELD SYMBOLS TO AS 1101 PART 3
 ALL WORKMANSHIP AND MATERIALS TO BE IN ACCORDANCE
 WITH AS4100 AND ALL OTHER CURRENT RELEVANT CODES.

DATE	REVISION	BY
02.12.17	A. REVISED TO SUIT CLIENT MARK-UP	S.B.

Fabquip
 Construction Systems Pty. Ltd.

PAST PROJECT
 HYDRAULIC SCREEN LAYOUT

Head Office
 30-42 Fitzpatrick Street
 Rossmore NSW Australia 2212
 P.O. Box 924 Rossmore NSW 2212
 Tel: 02 9774 9009 Fax: 02 9774 9099
 Email: info@fabquip.com.au
 A.B.N. 64 002 667 238

SCALE	1 : 160 (A3)
DRAWN	S.B. 26.9.17
CHECKED	
CAD FILE No.	JF5674
	S5674-F-2A21

ANY QUESTIONS???

CONTACT DETAILS

FABQUIP CONSTRUCTION SYSTEMS
36-42 FITZPATRICK ST, REVESBY NSW 2212, AUSTRALIA
PHONE: +61 02 97744099
FAX: +61 02 97742473
EMAIL: info@fabquip.com